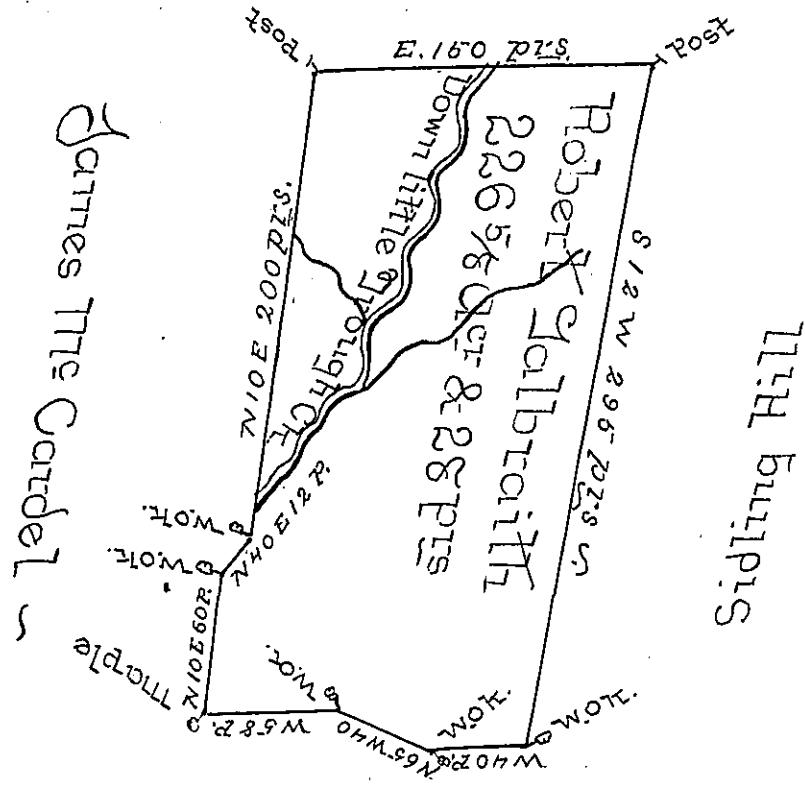


Fallen Timber



Samuel Dean

A Draught of a Tract of Land situate on Little Trough Creek adjoining Land of Samuel Dean and James McCardel containing 226 1/2 Acres & 28 Perches and the usual Allowance for Roads surveyed the 21st Day of Sept 1784 in pursuance of a Warrant granted to Robert Galbraith Dated the 24 Day of August 1784 - by

George Woods D.S.

John Lukens Esq: S.Y. S

IN TESTIMONY that the above is a copy of the original remaining on file in the Department of Internal Affairs of Pennsylvania, made conformably to an Act of Assembly approved the 16th day of February, 1833, I have hereunto set my Hand and caused the Seal of said Department to be affixed at Harrisburg, this

second day of November 1897

James W. Patton
Secretary of Internal Affairs.